

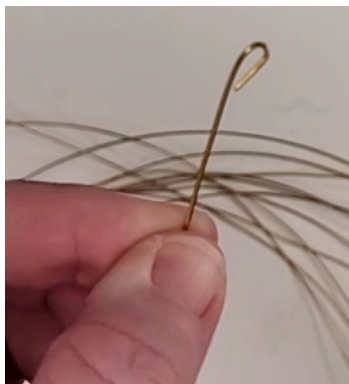
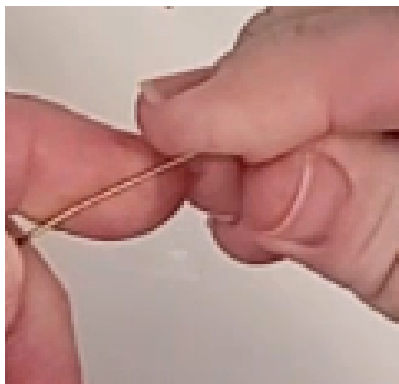
Materials

4 sizes of acrylic beads
Rock
12 pieces of 12" 20 gauge wire

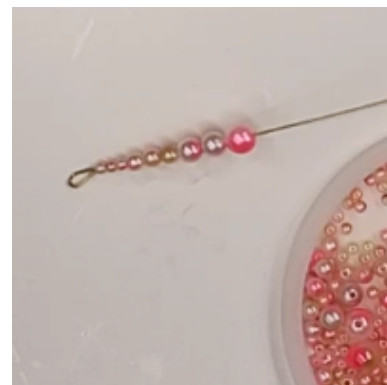


Instructions

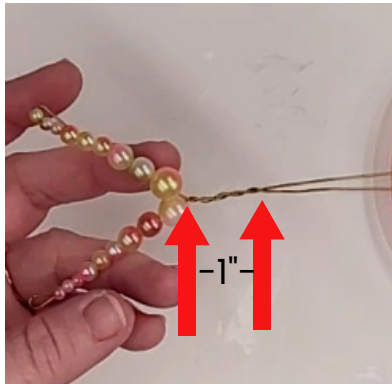
Bend a loop in one end of each piece of wire about 1/4" from the end. If it is too stiff for your hands, you can use pliers or the tip of a pair of scissors.



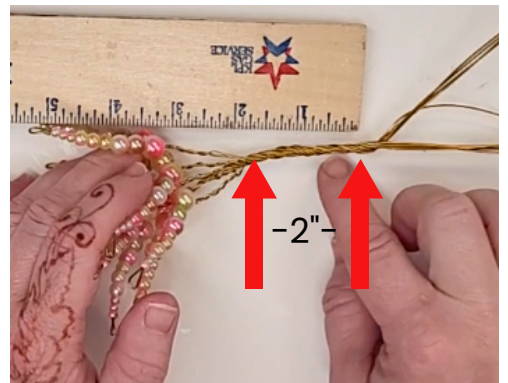
Pour the beads into a bowl. Thread beads onto each wire in this pattern: 3 small, 3 medium, 2 larger, 1 extra-large. Start with the smallest beads & work your way up.



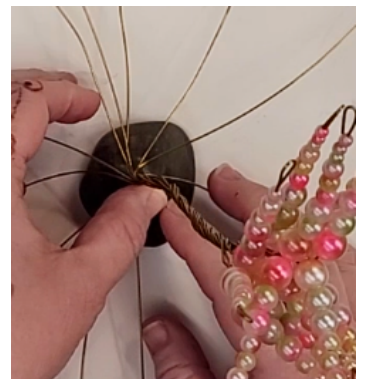
Gather 2 of the wires with beads. Hold them together just at the end of the beads. Twist like a twist-tie for about 1". Repeat for all wires. You should end up with 6 sets.



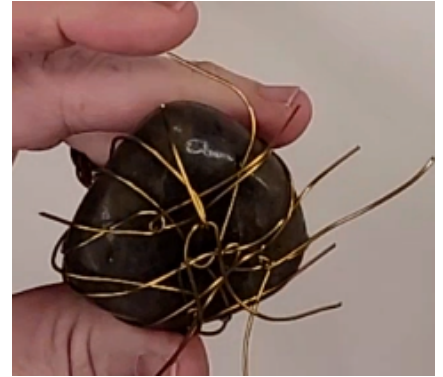
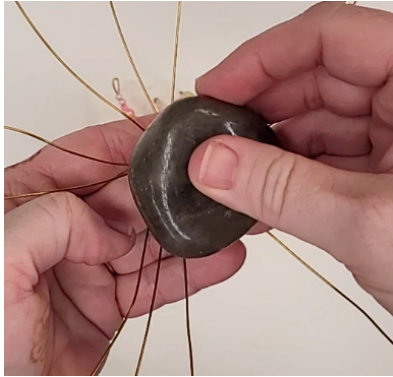
Gather all sets together. Where the 1" twisted sections end, start twisting all wires together to form the trunk. Twist for about 2".



Spread out the remaining wire at the bottom. These will form the roots. Place the rock on the table with the flattest part down. Decide where you want the tree positioned on your rock.



Holding the tree in place, flip the tree & rock over to the bottom. Grab 2 wires on opposite sides. Bring them together and twist them once to hold in place. Repeat for all 12 wires. Try to avoid making the twists on top of each other because that will form too much of a high spot and your rock will not sit flat.



Flatten out the knots as much as possible by firmly pressing the bottom of the rock onto the table. If you have long wires left over, you may bring them up and wrap them around the trunk of the tree. If the wires are too short, fold them over and tuck the ends under the rock. You may have to work with the bottom to try and position the wires around to get the rock to lay as flat as possible so the tree won't tip over.



Gently bend the beaded ends over in an arch to form a weeping willow shape. You may also bend the trunk just a little into a gentle curve, but do not bend it so far that your tree falls over.

