

# The Winding Valley and the Craggy Hillside

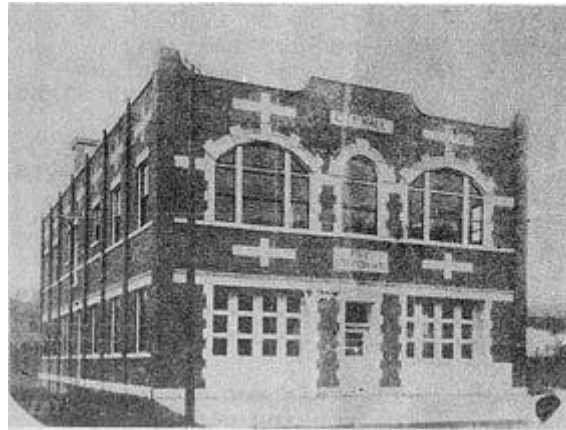
A History of the City of Rosedale, Kansas by Margaret Landis.  
Copyright 1976.

All attempts have been made to reproduce the spelling, capitalization and layout of the original book as much as possible.

## Chapter VII THE CITY HALL AND FIRE DEPARTMENT

The City of Rosedale, Kansas became a City of the Third Class, August 28, 1877. Three years later, (August 9, 1880), Ordinance No. 28 provided: "To levy a tax for the building of the City Hall of Rosedale, Kansas." The levy was 1% on the dollar on Real and Personal Property in the City Limits.

A frame building was erected at 1156 Kansas City Avenue. This building served until 1912 when Bonds for \$20.000 were approved for the construction of a new City Hall.



The New City Hall was built with Missouri Mottled Face Brick #1 on Lots 2 and 3 in Block 1, Rolling Mill Resurvey Addition. The City Offices, Fire Station on No. 1 and the City Jail were here.

The following poem appeared in The Inter-State News, Rosedale, Kansas, December 20, 1912:

### ROSEDALE, KANSAS, 1912

Rosedale, Kansas in the wild West,  
Almost the center of the United States;  
Her hills can be seen on every side,  
Decked with trees and roses fine,

To climb the hills in the summer time,  
The pleasant breeze is something fine.

Down from her hill tops can be seen  
One of nature's winding streams  
Winding its way through the ravines  
Where nature's beauty can be seen.

Of cold and heat we can't complain;  
In season we have snow and rain,  
But take it all the year around  
A healthy climate can be found.

Our town is growing very fast --  
Plenty of water and natural gas,  
With electric light to see at night  
And city officials to keep things right.

We have a man we must confess  
The youngest mayor in the United States,  
A fine equipment he has bought,  
And now the town begins to boast.

The old city hall had to vacate  
For a modern building to fill its place.  
Our schools and churches are up-to-date  
And the business men are in the race.

The sewerage fight is won at last,  
Helping out the working class,  
In passing through our growing town  
Visitors are welcome all the time.

-- Anthony Johnston.

(Mr. Johnston owned a bakery on Dodd Street in Rosedale.)

### **FIRE DEPARTMENT**

In 1889, Rosedale organized a Volunteer Fire Department and equipped a Hook and Ladder Company. There were sheds that housed fire hose and was carried on 2-Wheel Carts. The sheds were located:

Hose Co. No. 1 - Southwest Blvd. Cor. D. Street

Hose Co. No. 2 - Southwest Blvd. Cor. 2nd Street

Hose Co. No. 3 - Booth Cor. 39th Street

Hose Co. No. 4 - Kansas City Avenue Cor. Henning

February 1912, The City of Rosedale purchased from The City of Atchison, Kansas, the combination chemical and hose wagon.



Fire Department - Rosedale, Kansas - 1912

Chief Neal Geary                      Walter Harris                      Driver Oswald Green  
(Cornelius T.)

Serving on the purchasing committee were: A.T. (Al.) Stewart, (Undertaker); John Stuhlman, (Monument Maker); C.B. Stevens, (Veterinarian) and H.W. Gates, (Livery Stables and Undertaker).

A new Motor-Propelled Combination Fire Car that included pumper and hose, water and side ladders was put in service October 1915.

After Annexation, April 25, 1922, Rosedale Fire Station No. 1 became Kansas City, Kansas Station No. 10, Rosedale District.

One of the provisions of Annexation was that a Fire Station would be built "on top of the hill."



Kansas City, Kansas Fire Station No. 12

Kansas City, Kansas Fire Station No. 12, a new, cottage type building was built at 43rd Street and Rainbow Boulevard and put in service November 1924. The equipment, a Thomas Flyer Truck, for this station came from the Kansas City, Kansas Fire Department.