

PUBLIC LIBRARY

AND

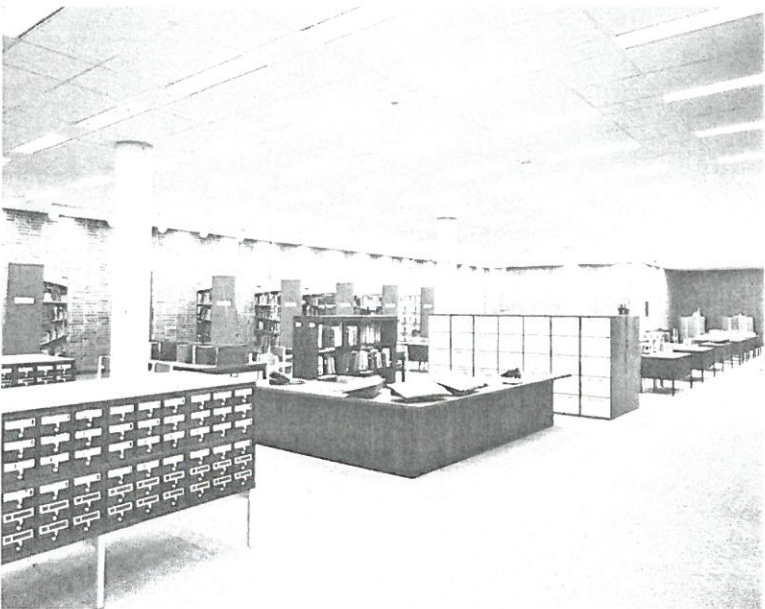
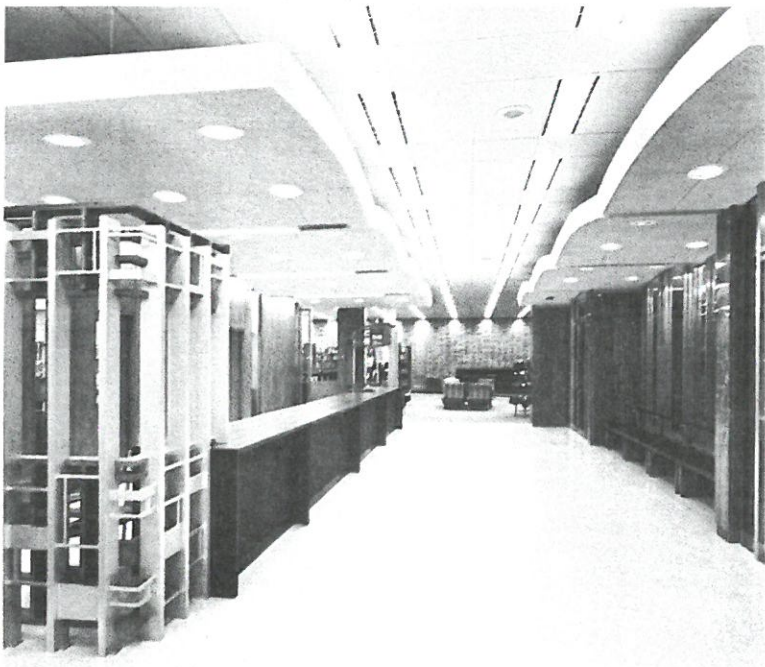
SCHOOL ADMINISTRATION BUILDING
KANSAS CITY, KANSAS



West Side Main Library Floor. Informal reading and browsing. Fiction, biography, general stack area

DEDICATION

APRIL 17, 1966



CIRCULATION AREA

Grade entrance from Minnesota Avenue, crossing a terrace paved with variegated pebbled concrete leads the patron through a marbled wall stair and elevator lobby to the main circulation area.

The circulation, or charging desk has a butcher block top of edge grain walnut and front panels of carefully matched beautifully grained walnut. Books are photographically charged on microfilm.

A large work center is provided at the rear of the charging area, with visible control through glass panels.

REFERENCE AREA

The completely carpeted reference area utilizes counter high card catalog cabinets of walnut, double faced, with integral tops. The reference desk is custom built of walnut, and accommodates two professional librarians.

A bank of seventy legal size filing drawers is readily accessible, as are special shelves and tables for reference materials.

Hand rubbed oil finished walnut tables for two persons may be seen beyond the files. At the rear are the storage cabinets for microfilm and the microfilm readers.

MUSIC AND ART

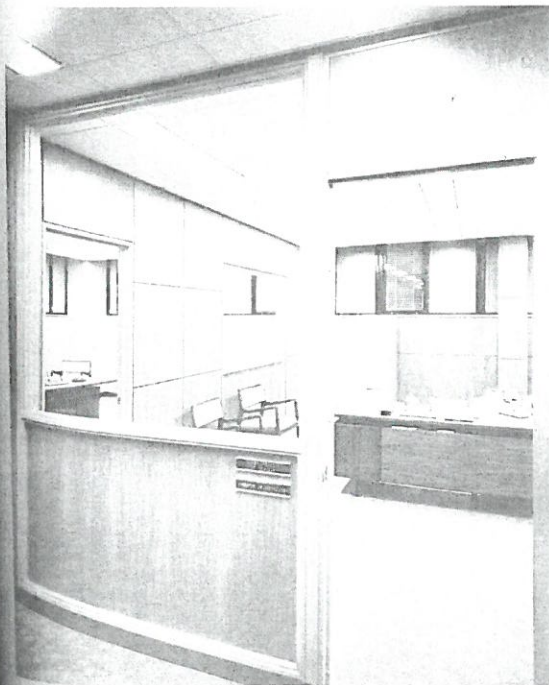
A separate department for music and art literature, motion picture films, and phonographic records, occupies a large carpeted room on the second floor. Public access is by passenger elevator and stairs, and a freight elevator in the rear, a central stair well, and a shaft for future conveyor equipment serve the library staff.

Two walnut tables, each equipped with two turntables, high fidelity amplifiers and head sets permit eight persons to listen at one time with no interference with others in the room.

Danish modern chairs of walnut and ash are provided for these tables, as well as for other study areas of the library.

**A SECRETARIAL OFFICE
SCHOOL ADMINISTRATION**

The meeting room of the board of education and offices of the administrative staff of the public school district of Kansas City, Kansas, Unified School District No. 500, occupy the third floor. Administrative offices for the library are on the second floor, as is an audio-visual department serving both public schools and public library.



The school district of Kansas City, Kansas operates the public library and its branches. Budgeting and financing for current expenditures are under separate funds. Construction of and equipment and furnishings for the new building were financed by bonds authorized in 1958 in a school building bond election.

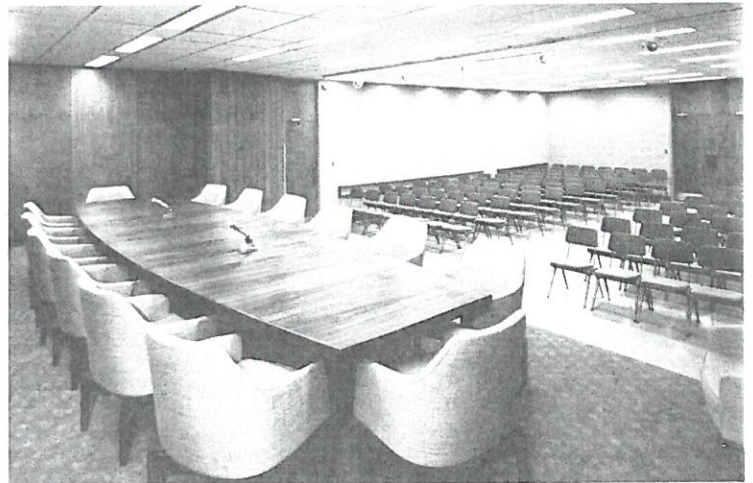
An aluminum plaque on the wall of the Kansas Room of the library identifies the following board members and administrators with planning the construction program:

BOARD OF EDUCATION

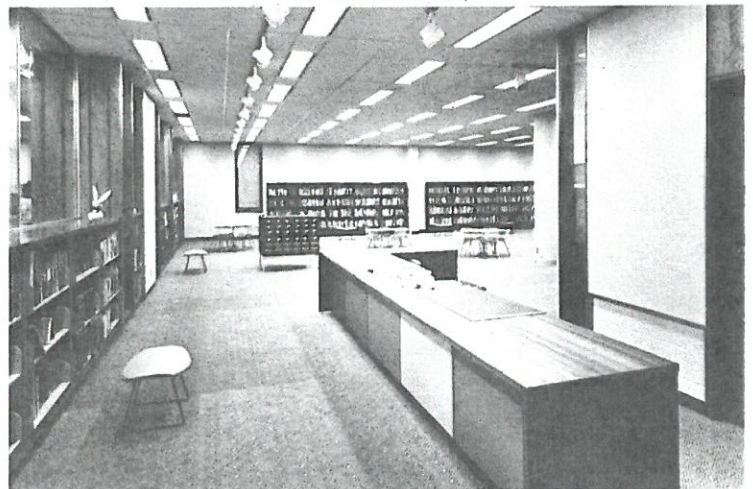
Lee C. Berns, DDS	Robert O. Fothergill
Roy A. Edwards	Ralph A. Fulton
Ralph E. Evans	Joe H. Vaughan
John O. Yulich, MD	

Superintendent of Schools	O. L. Plucker
Superintendent Emeritus	F. L. Schlagle
Business Manager	Lewis H. Brotherson
Head Librarian	Willard K. Dennis

Board of Education Meeting Room and Auditorium



The Children's Library





KANSAS CITY, KANSAS PUBLIC LIBRARY AND SCHOOL ADMINISTRATION BUILDING

A Carnegie Library was built in 1902 on a site dedicated "for seminary purposes". The new building occupies part of that site plus the north portion of Huron Park under agreement with the city commissioners.

The library sets back seventy feet from Minnesota Avenue, with a pebble paved terrace. At ground level it has a frontage of 138 feet with 150 feet depth. There is a full basement and three stories. The frame is reinforced concrete. Exterior walls are of two shades of brick, trimmed with pre-cast exposed aggregate concrete. An aluminum and glass curtain wall encloses the third floor.

All public areas of the library with the exception of steel book stack sections are carpeted. Carpet is used also in the school administration area. Gas is used as fuel, with oil standby. The building is completely air conditioned. Heating and cooling are zone controlled by mixing dampers.

Rooms are separately monitored by thermostats. Air is supplied and exhausted through diffusers housing the fluorescent lighting troffers.

A generous use of birch panelling throughout the building lends warmth to the structure. This is further enhanced by the hand rubbed oil finished walnut furniture and carefully selected upholstering fabrics.

Radotinsky-Meyn-Deardorff of Kansas City, Kansas, were architects for the project. All construction, including heating, air conditioning, electrical, plumbing, and landscaping, was performed by Bob Eldridge Construction Co., Inc., also of Kansas City. Final contract cost of the building was \$1,402,829.20, plus \$90,320.66 for carpeting and fluorescent lighting fixtures. The cost of furniture and equipment was \$177,085.53. Principal sources of equipment and furniture were:

CONTINENTAL ELECTRIC COMPANY

NATIONAL THEATRE SUPPLY

AMERICAN OFFICE EQUIPMENT/INTERIORS, INC.

EDWARD KEITH, INC.

HOOVER BROTHERS, INC.

ESTEY CORPORATION

**REMINGTON OFFICE SYSTEMS DIV.,
SPERRY RAND CORP.**

WESTINGHOUSE FLUORESCENT LIGHTING FIXTURES

ALEXANDER SMITH CRESTWOOD CARPET

**WALNUT OFFICE FURNITURE, LIBRARY CHAIRS, TABLES,
AND CHARGING DESKS BY JENS RISOM DESIGN, INC.
STEEL OFFICE FURNITURE BY CORY JAMESTOWN**

**WALNUT INFORMAL FURNITURE BY JENS RISOM DESIGN,
INC. CONFERENCE ROOM FURNITURE BY THONET**

**AUDITORIUM CHAIRS BY CRAMER AND AMERICAN
SEATING COMPANY. WALNUT LIBRARY SHELVES BY
SJOSTROM**

STEEL STACKS

WALNUT CARD CATALOG FILES