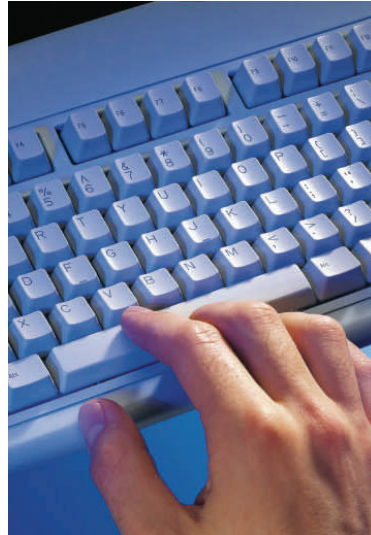


The Main Library's computer classroom will be available to those wanting to e-file their taxes during the following times:

April

Thu 1	9-11 am
Sat 3	9-11 am
Tue 6	9-11 am
Wed 7	1-3 pm
Thu 8	9-11 am
Sat 10	9-11 am
Tue 13	9-11 am
Wed 14	1-3 pm
Thu 15	9-11 am



Please note:

The library provides computer access only. Library staff are not able to help you file your taxes. Due to the time it takes to e-file, you must be in the classroom and started 1 hour before the end of the scheduled session.



Kansas City, Kansas
Public Library